

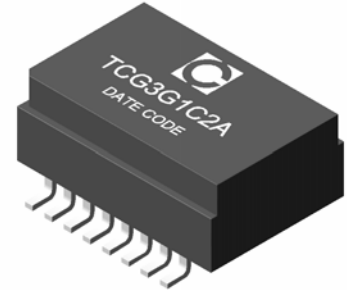


## ISDN S<sub>0</sub> Miniature SMD Interface Modules

### P/N: TCG3G1C2A

#### Feature

- excellent output characteristics ensures compliance with CCITT.I.430 pulse waveform template when used with recommended IC pairing.
- SMD modules are designed for pick and place compatability.
- excellent and consistent balance between windings.
- modular design maximizes suppression effectivity and transmission properties.
- full compatibility with all common IC's.
- RoHS compliant.

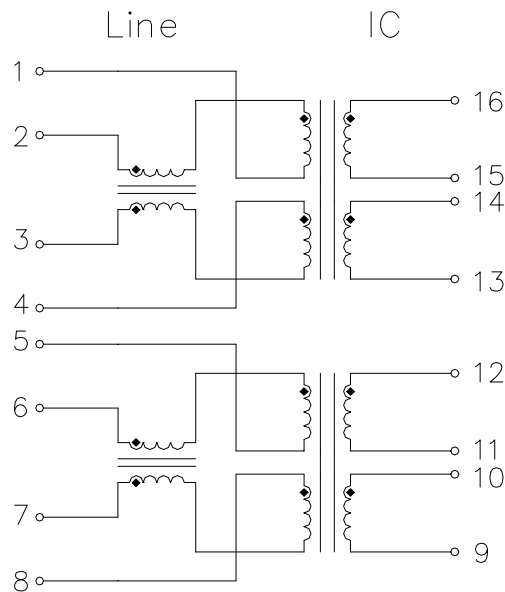


#### Electrical Specifications @ 25°C

Part Number	Turns Ratio (±5%)	OCL (mH Min) @10KHz/0.1V	L <sub>L</sub> (μH Max) @ 100KHz/0.1V	C <sub>ww</sub> (pF Max)@ 10KHz/0.1V	DCR (Ω)	HI-POT (Vrms)	Common Mode Choke	
							L <sub>N</sub> (μH)@ 100KHz/0.02V	R <sub>N</sub> (Ω)
TCG3G1C2A	1:1:2:2	30	5	50	2.3/pri & 4.4/sec	1500	50	0.5

\* Operating temperature range: 0°C to +70°C. Storage temperature range: -25°C to +125°C.

#### Schematic



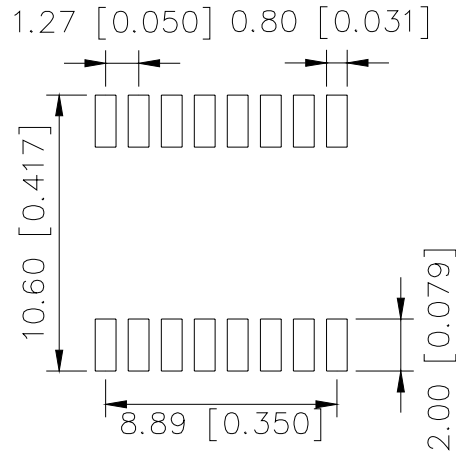
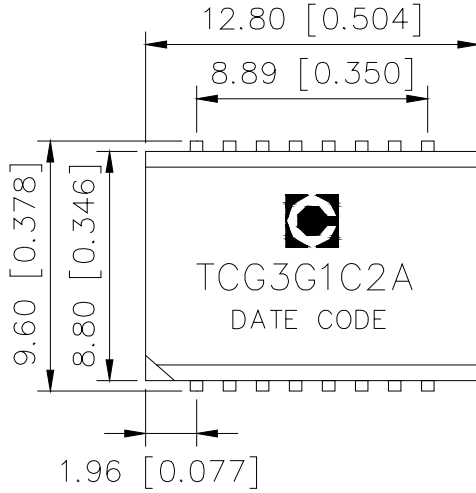
<b>Tel:+86-20-81628973</b>	<b>Fax:+86-20-81628967</b>
<b>E-mail:sales@ceetus.com.cn</b>	<b>Website:www.ceetus.com.cn</b>



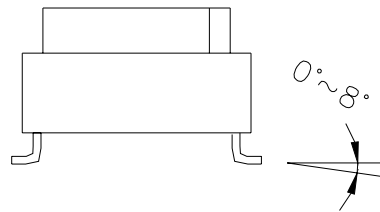
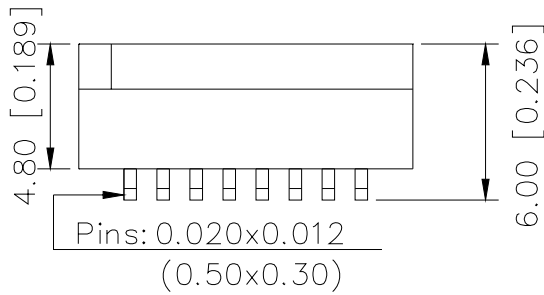
## ISDN S<sub>0</sub> Miniature SMD Interface Modules

P/N: TCG3G1C2A

### Mechanical



SUGGESTED PAD LAYOUT



Dimensions are in inches [millimeters].  
Tolerance: ±0.25 (0.010) unless specified otherwise.

### Note:

#### Datasheet Change History:

V0	2007/Mar.	Datasheet Set Up

Tel:+86-20-81628973

Fax:+86-20-81628967

E-mail:sales@ceetus.com.cn

Website:www.ceetus.com.cn